

# Specifications

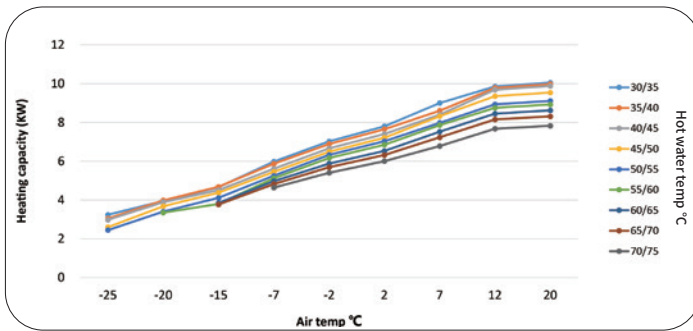


## SPRSUN CGK030V4P / CGK-030V4P

R290 Refrigerant/High Safety Performance/ErP A+++

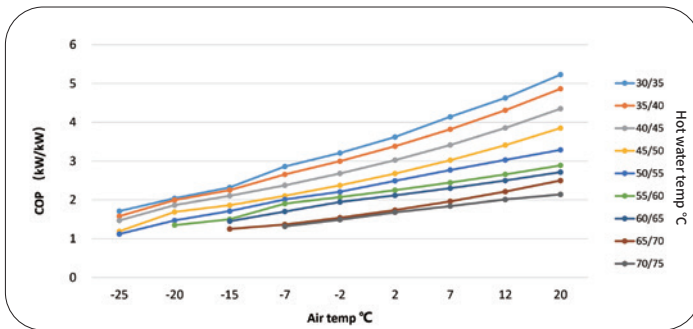
Power Supply	V/Hz/Ph	220-240/50/1, 380-420/50/3
Sound Pressure (1m)	dB(A)	46
Refrigerant	/	R290
ErP Level(35° C)	/	A+++
Cabinet Type	/	Weather-resistant pp+Galvanizedsheet metal+ASA
Net Weight	kg	105
Net Dimension(L*D*H)	mm	1110×475×810

### CGK030V4P/CGK-030V4P Heating capacity



Air temp °C	Heating capacity (kW)								
-25	3.24	3.05	2.98	2.60	2.45	/	/	/	/
-20	3.95	3.98	3.89	3.68	3.40	3.35	/	/	/
-15	4.66	4.68	4.51	4.38	4.11	3.80	3.85	3.77	/
-7	5.98	5.87	5.61	5.45	5.25	5.12	4.97	4.82	4.64
-2	7.02	6.89	6.66	6.49	6.33	6.17	5.88	5.69	5.40
2	7.80	7.65	7.40	7.21	7.03	6.85	6.53	6.32	6.00
7	9.00	8.60	8.40	8.32	7.98	7.86	7.52	7.23	6.78
12	9.85	9.78	9.68	9.35	8.93	8.75	8.45	8.15	7.67
20	10.05	9.97	9.88	9.54	9.11	8.93	8.62	8.31	7.83
Hot water temp °C	30/35	35/40	40/45	45/50	50/55	55/60	60/65	65/70	70/75

### CGK030V4P/CGK-030V4P COP



Air temp °C	COP (kW/kW)								
-25	1.71	1.58	1.47	1.19	1.12	/	/	/	/
-20	2.04	1.99	1.86	1.69	1.47	1.35	/	/	/
-15	2.32	2.25	2.10	1.86	1.71	1.50	1.45	1.25	/
-7	2.86	2.66	2.37	2.10	2.01	1.90	1.70	1.36	1.32
-2	3.21	3.00	2.68	2.37	2.21	2.07	1.95	1.54	1.49
2	3.62	3.38	3.03	2.68	2.49	2.25	2.11	1.74	1.68
7	4.14	3.82	3.41	3.02	2.77	2.44	2.30	1.96	1.84
12	4.63	4.31	3.85	3.41	3.03	2.66	2.50	2.21	2.01
20	5.23	4.86	4.35	3.85	3.29	2.89	2.72	2.50	2.14
Hot water temp °C	30/35	35/40	40/45	45/50	50/55	55/60	60/65	65/70	70/75

\* The information in this document is just for reference. Since the continuous improvement and control in the production process, the information contained in this document may be subject to change. Please refer to the nameplate on the machine for model specifications.



# Specifications

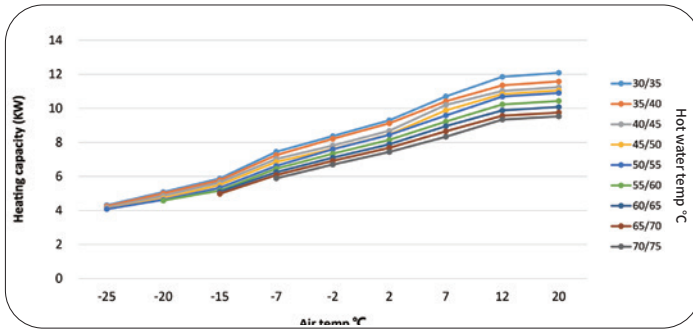


## SPRSUN CGK040V4P / CGK-040V4P

R290 Refrigerant/High Safety Performance/ErP A+++

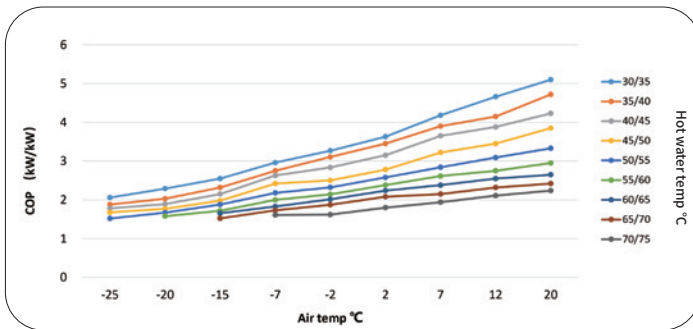
Power Supply	V/Hz/Ph	220-240/50/1, 380-420/50/3
Sound Pressure (1m)	dB(A)	46
Refrigerant	/	R290
ErP Level(35° C)	/	A+++
Cabinet Type	/	Weather-resistant pp+Galvanizedsheet metal+ASA
Net Weight	kg	88
Net Dimension(L*D*H)	mm	1110×475×960

### CGK040V4P/CGK-040V4P Heating capacity



Air temp °C	Heating capacity (kW)									
-25	4.31	4.25	4.17	4.10	4.08	/	/	/	/	/
-20	5.08	5.00	4.86	4.72	4.63	4.58	/	/	/	/
-15	5.88	5.78	5.65	5.50	5.33	5.17	5.10	4.98	/	/
-7	7.45	7.25	7.03	6.85	6.62	6.45	6.25	6.08	5.89	/
-2	8.37	8.21	7.81	7.61	7.60	7.34	7.10	6.91	6.70	/
2	9.30	9.12	8.68	8.46	8.44	8.15	7.89	7.68	7.44	/
7	10.70	10.41	10.20	9.88	9.58	9.22	8.95	8.65	8.33	/
12	11.85	11.35	11.02	10.84	10.69	10.23	9.88	9.56	9.34	/
20	12.09	11.58	11.24	11.06	10.90	10.43	10.08	9.75	9.53	/
Hot water temp °C	30/35	35/40	40/45	45/50	50/55	55/60	60/65	65/70	70/75	

### CGK040V4P/CGK-040V4P COP



Air temp °C	COP (kW/kW)									
-25	2.06	1.88	1.78	1.68	1.52	/	/	/	/	/
-20	2.29	2.03	1.89	1.77	1.67	1.58	/	/	/	/
-15	2.55	2.32	2.15	1.98	1.88	1.72	1.66	1.52	/	/
-7	2.96	2.75	2.63	2.42	2.18	2.00	1.83	1.73	1.61	/
-2	3.27	3.11	2.84	2.50	2.32	2.14	2.02	1.87	1.62	/
2	3.63	3.45	3.15	2.78	2.58	2.38	2.24	2.08	1.80	/
7	4.18	3.90	3.65	3.22	2.84	2.62	2.38	2.15	1.94	/
12	4.66	4.15	3.88	3.45	3.09	2.75	2.55	2.32	2.11	/
20	5.10	4.72	4.23	3.85	3.33	2.95	2.65	2.42	2.24	/
Hot water temp °C	30/35	35/40	40/45	45/50	50/55	55/60	60/65	65/70	70/75	

\* The information in this document is just for reference. Since the continuous improvement and control in the production process, the information contained in this document may be subject to change. Please refer to the nameplate on the machine for model specifications.



# Specifications

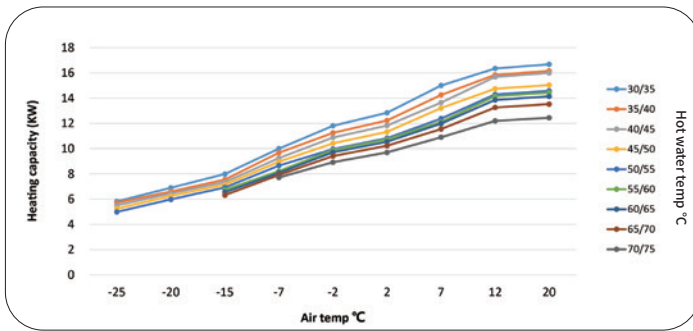


## SPRSUN CGK050V4P / CGK-050V4P

R290 Refrigerant/High Safety Performance/ErP A+++

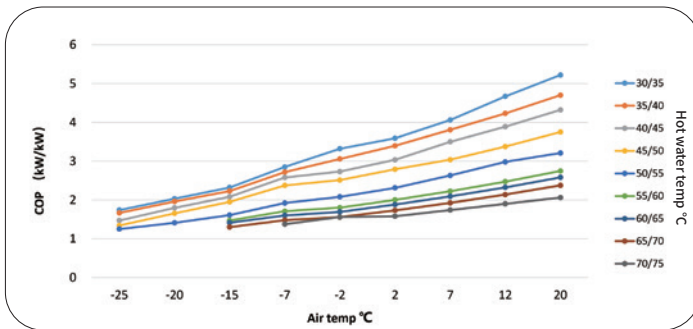
Power Supply	V/Hz/Ph	220-240/50/1, 380-420/50/3
Sound Pressure (1m)	dB(A)	46
Refrigerant	/	R290
ErP Level(35° C)	/	A+++
Cabinet Type	/	Weather-resistant pp+Galvanizedsheet metal+ASA
Net Weight	kg	124
Net Dimension(L*D*H)	mm	1110×475×1355

### CGK050V4P/CGK-050V4P Heating capacity



Air temp °C	Heating capacity (kW)								
-25	5.82	5.72	5.51	5.25	4.99	/	/	/	/
-20	6.90	6.60	6.45	6.25	5.98	/	/	/	/
-15	7.99	7.55	7.35	7.15	6.93	6.74	6.55	6.32	/
-7	10.00	9.67	9.25	8.96	8.66	8.22	8.09	7.92	7.72
-2	11.81	11.25	10.88	10.42	9.96	9.89	9.71	9.41	8.92
2	12.84	12.23	11.83	11.33	10.83	10.75	10.55	10.23	9.70
7	15.00	14.25	13.65	13.21	12.38	12.12	11.98	11.55	10.90
12	16.35	15.84	15.68	14.74	14.29	14.15	13.86	13.26	12.20
20	16.68	16.16	16.00	15.04	14.58	14.43	14.14	13.53	12.44
Hot water temp °C	30/35	35/40	40/45	45/50	50/55	55/60	60/65	65/70	70/75

### CGK050V4P/CGK-050V4P COP



Air temp °C	COP (kW/kW)								
-25	1.74	1.67	1.47	1.34	1.25	/	/	/	/
-20	2.03	1.96	1.80	1.65	1.41	/	/	/	/
-15	2.32	2.23	2.08	1.95	1.61	1.47	1.41	1.30	/
-7	2.85	2.72	2.58	2.37	1.92	1.71	1.60	1.48	1.37
-2	3.32	3.06	2.73	2.51	2.08	1.80	1.69	1.56	1.56
2	3.59	3.40	3.03	2.79	2.31	2.00	1.88	1.73	1.58
7	4.06	3.81	3.50	3.04	2.63	2.22	2.09	1.92	1.74
12	4.67	4.23	3.89	3.38	2.98	2.47	2.32	2.14	1.90
20	5.22	4.70	4.32	3.75	3.21	2.75	2.58	2.37	2.06
Hot water temp °C	30/35	35/40	40/45	45/50	50/55	55/60	60/65	65/70	70/75

\* The information in this document is just for reference. Since the continuous improvement and control in the production process, the information contained in this document may be subject to change. Please refer to the nameplate on the machine for model specifications.



# Specifications

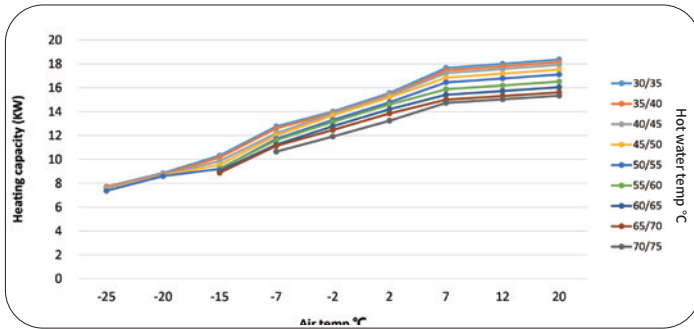


## SPRSUN CGK060V4P / CGK-060V4P

R290 Refrigerant/High Safety Performance/ErP A+++

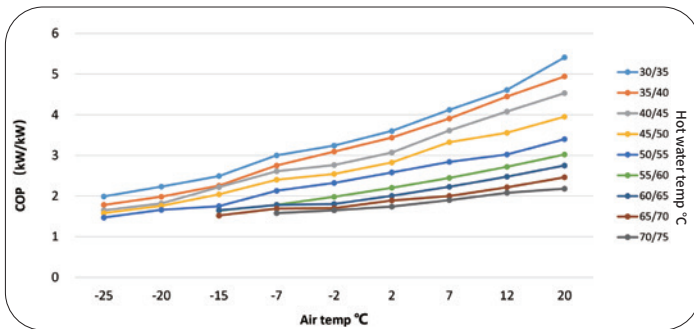
Power Supply	V/Hz/Ph	220-240/50/1, 380-420/50/3
Sound Pressure (1m)	dB(A)	46
Refrigerant	/	R290
ErP Level(35° C)	/	A+++
Cabinet Type	/	Weather-resistant pp+Galanizedsheet metal+ASA
Net Weight	kg	124
Net Dimension(L*D*H)	mm	1110×475×1355

### CGK060V4P/CGK-060V4P Heating capacity



Air temp °C	Heating capacity (kW)									
-25	7.71	7.68	7.58	7.45	7.37	/	/	/	/	/
-20	8.85	8.75	8.69	8.65	8.60	/	/	/	/	/
-15	10.32	10.15	9.85	9.55	9.20	9.24	9.05	8.88	/	/
-7	12.77	12.60	12.20	12.02	11.72	11.60	11.24	11.13	10.65	/
-2	14.00	13.88	13.82	13.68	13.30	13.14	12.78	12.47	11.92	/
2	15.56	15.42	15.35	15.20	14.78	14.60	14.20	13.85	13.24	/
7	17.66	17.45	17.23	16.85	16.45	15.88	15.42	15.01	14.74	/
12	18.01	17.80	17.57	17.19	16.78	16.20	15.73	15.31	15.03	/
20	18.37	18.15	17.93	17.53	17.11	16.52	16.04	15.62	15.34	/
Hot water temp °C	30/35	35/40	40/45	45/50	50/55	55/60	60/65	65/70	70/75	

### CGK060V4P/CGK-060V4P COP



Air temp °C	COP (kW/kW)									
-25	1.99	1.78	1.65	1.58	1.47	/	/	/	/	/
-20	2.23	1.98	1.82	1.76	1.66	/	/	/	/	/
-15	2.49	2.25	2.22	2.04	1.75	1.64	1.65	1.52	/	/
-7	3.00	2.75	2.61	2.40	2.13	1.78	1.78	1.69	1.58	/
-2	3.24	3.09	2.76	2.54	2.32	1.98	1.80	1.70	1.65	/
2	3.60	3.44	3.07	2.82	2.58	2.20	2.00	1.89	1.74	/
7	4.12	3.91	3.61	3.32	2.84	2.45	2.23	2.00	1.90	/
12	4.61	4.45	4.08	3.56	3.02	2.72	2.48	2.21	2.08	/
20	5.41	4.94	4.53	3.95	3.40	3.02	2.75	2.46	2.18	/
Hot water temp °C	30/35	35/40	40/45	45/50	50/55	55/60	60/65	65/70	70/75	

\* The information in this document is just for reference. Since the continuous improvement and control in the production process, the information contained in this document may be subject to change. Please refer to the nameplate on the machine for model specifications.

